

**Radial Ball Bearing**

**Corrosion Resistant Products**

- Single row radial ball bearings
- Sealed shielded and open type 600, 6000, 6200, 6300, 6800, 6900, W6000 series
- Sealed shielded and open type R. FR, F600, MR, 1600 series
- Double row 5200, 5300 series
- Electric motor quality (EMQ) 6000, 6200, 6300 sealed and shielded
- Special configurations and features-consult us



**Wheel Hub Units and Bearings**



Quality-Dependability-Service  
**BEARING 2000**



As an ISO certified manufacturer with years of experience serving businesses throughout the world, **Bearing 2000** has established a reputation for consistent quality, on-time delivery and excellent customer service.

**Bearing 2000** supplies OEM's and after-market users in such fields as the aerospace industry, agricultural equipment manufacturing and repair, food processing and packaging, roller manufacturing, truck and trailer manufacturing and repair, race car and motorcycle manufacturing, car-wash systems manufacturing and many other areas as well.

Our multi-million dollar inventory and proprietary inventory management system reduces procurement time and insures same day shipping on most orders.

Our years of experience in the design and manufacture of precision bearings enables us to handle requirements for different industrial applications. Our engineering department can assist in the development and production of custom designed parts and special items.

Visit our web site at [WWW.bearing2000.com](http://www.bearing2000.com) for more information.

**BEARING 2000**

Address: 290 W Bonita Avenue Pomona, CA 91767  
Tel: 909-593-7848z  
Fax: 909-593-6667  
Toll free: 877-533-1212  
E-mail: [sales@bearing2000.com](mailto:sales@bearing2000.com)  
Http://www.bearing2000.com

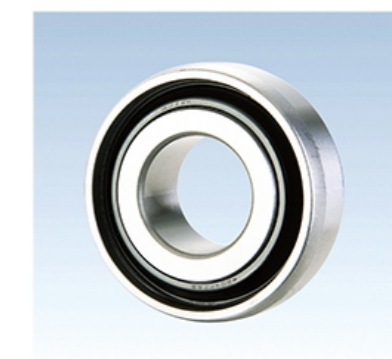
**Agricultural Bearings**

Our bearings are available with single, double and triple lip seals. They are specially designed for the agricultural conditions and applications.

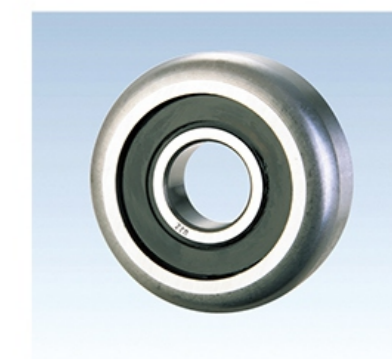
- Disc Harrow
- Flanged Disc
- Agricultural Specials including round, square bore, hex bore
- Special configurations and features-consult us



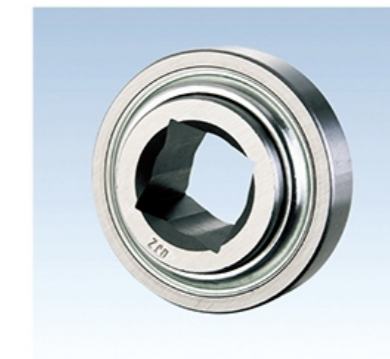
Round Bore  
Non-Relubricable



Round Bore  
Non-Relubricable



Round Bore  
Non-Relubricable



Square Bore  
Non-Relubricable



Hex Bore Series



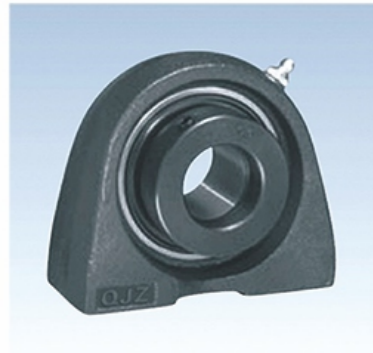
Flanged Disc Unit

**Mounted Units**

**Standard products**

**Set screw lock and eccentric locking collar available**

- Pillow blocks (UCP, NAP, UCPL, NAPL, SAP, SBP, SAPL, SBPL, SAAK, SBAK)
- Tapped base pillow blocks (UCPA, NAPA, SAPA, SBPA)
- 4 bolt flanges (UCF, SAF, SBF, NAF)
- 3 bolt flanges (SARFB, SBRFB, UCFB)
- 2 bolt flanges (UCFL, NAFL, SAFL, SBFL, SALF, SBLF)
- 4 bolt piloted flanges (UCFC)
- Inserts (SA, SB, HC, NA, UC, CSA, CSB,ER)
- Take up units (UCT, NAT)



Tapped Base Pillow Blocks



3 Bolt Flange Brackets



2 Bolt Flanges



4 Bolt Flanges



Pillow Blocks



Hanger Units



3 Bolt Flanges



4 Bolt Piloted Flanges



Take Up Units



Bearing Inserts

**Spherical Roller Bearings**

- 222K, 213K, 231K, 230K, 223K, 232K, 240K30, 24130K Series (ID size form 25mm-290mm)



**Spherical Plain Bearings and Rod ends**

- GEZ, ES & GEZ, ES-2RS (ID size from 0.5-6 inch GEZ008-GEZ096)
- COM (Commercial low carbon steel)
- Two-Piece (body, ball) commercial /industrial rod ends (CM/CF, CM-T/CF-T, CM-Y/CF-Y, CM-M/CF-M)
- Three-piece (body, ball and race) precision rod ends (JM/JML, RSM/RSML)
- Heavy-duty shank (RSMX/RSMLX, JMX/JMLX)
- Special configurations and features-consult us



**Taper Roller Bearings**

- Single row tapered roller bearings
- Double row tapered roller bearings
- Inch dimension tapered roller bearings
- Metric dimension tapered roller bearings
- Sealed taper roller bearings
- Special configurations and features-consult us



**Needle Bearing Products**

- Drawn Cup Needle Roller Bearings
- Radial Needle Roller and Cage Assemblies
- Heavy-duty Needle Roller Bearings
- Thrust Needle Roller Bearings
- Track Rollers/Cam Followers
- Drawn Cup Roller Clutches and Bearing Assemblies
- Needle Rollers

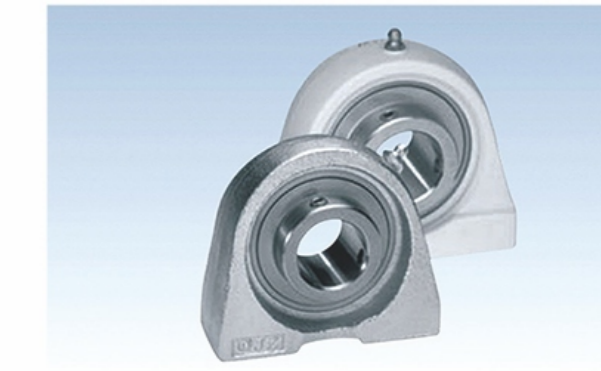


**Corrosion Resistant Products**

- All stainless steel units
- Stainless steel insert /thermoplastic housing
- Black oxide insert /thermoplastic housing
- Stainless insert /aluminum housing



3 Bolt Flange Brackets



Tapped Base Pillow Blocks



2 Bolt Flanges



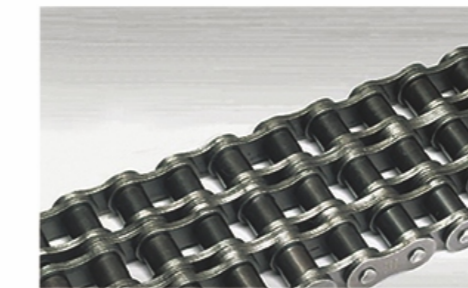
Pillow Blocks



4 Bolt Flanges



Hanger Units



**Chains and Sprockets**

- Steel Agricultural
- Short Pitch A. B. Series
- Heavy Duty Series
- Double Pitch Series
- A Type & CA type Steel Agricultural
- C Type
- Combine Chains
- Special configurations and features-consult us



**Special Items**

- Customized Items: Pulleys, Rod Ends, Bushings, etc.